

Features

- High efficiency and excellent thermal performance
- Output remote sense
- Output over-voltage, over-current, short-circuit and over-temperature protections
- Fixed frequency operation
- 1,500Vdc input to output isolation
- Wide operating temperature range from -40°C to +100°C
- UL 62368-1 2nd edition recognized
- Qualification/Screening satisfy: IPC-9592



Absolute Maximum Ratings

Excessive stresses over these absolute maximum ratings can cause damage to the converter. Operation should be limited to the conditions outlined under the Electrical Specifications.

Parameter	Min	Max	Unit
Input Voltage (continuous)	-0.5	40	Vdc
Input Voltage (< 100ms, operating)	-	50	Vdc
Input Voltage (continuous, non-operating)	-	50	Vdc
Storage Temperature	-55	125	°C

Part Numbering System

SYR	S2	□□□	□	□□□	□	□	□	(□)	-	□
Family Name	Input Voltage	Output Voltage	Enabling Logic	Rated Output Current	Pin Length	Electrical Options	Packaging	Suffix	-	Operating Temperature *Grade (°C)
	S2: 18-36V	Unit: 0.1V 050: 5V	P: Positive N: Negative	Unit: A 003: 3A	K: 0.095" N: 0.130" R: 0.165"	0: Latch off 2: Auto-restart	P: Without flange F: With flange	Variation code	-	C: -20 to +100 H: -40 to +100

* Operating temperature is the temperature measured at the center of the baseplate.

Available Codes:

Output Voltage	3.3V	5V	6V*	8V	9V*	12V	15V	28V
Output Current	10A,15A,25A	12A,17A	6A,12A	8A,11A	6A	3A,7.5A	3A,6A	2.5A

* Designed to meet UL62368-1 2nd edition.

SYRS2 Series 18 – 36V Input Sixteenth Brick Converters

Electrical Specifications

These specifications are valid over the converter's full range of input voltage, resistive load, and operating temperature unless noted otherwise.

Input Specifications

Parameter	Min	Typical	Max	Unit
Input Voltage	18	24	36	Vdc
Input Turn-on Voltage Threshold	16.5	17.0	18.0	V
Input Turn-off Voltage Threshold	15.5	16.0	17.0	V

Output Specifications

Parameter	Min	Typical	Max	Unit
Output Voltage Set Point Accuracy (typical Vin; full load; Ta = 25°C)	-1.5	-	+1.5	%Vo
Output Voltage Set Point Accuracy (over all conditions)	-3	-	+3	%Vo
Output Regulation:				
Line Regulation (full range input voltage, 1/2 full load)	-	0.2	0.5	%Vo
Load Regulation (full range load, typical Vin)	-	0.2	0.5	
Temperature (Ta = -40°C to 85 °C)	-	0.1	-	
Output Trim Range in % of typical Vo	80	-	110	%

General Specifications

Parameter	Min	Typical	Max	Unit
Remote Enable				
Logic Low:				
ION/OFF = 1.0mA	0	-	1.2	V
VON/OFF = 0.0V	-	-	1.0	mA
Logic High:				
ION/OFF = 0.0µA	3.5	-	15	V
Leakage Current	-	-	50	µA
Isolation Capacitance	-	1,200	-	pF
Insulation Resistance	10	-	-	MΩ

Module Specific Specifications

3.3V/10A Module (SYRS2033x010xxx(x)-x)

Parameter	Min	Typical	Max	Unit
Input Current	-	-	3.5	A
Quiescent Input Current (typical Vin)	-	100	120	mA
Standby Input Current	-	4	6	mA
Efficiency (typical Vin; full load, Ta = 25°C)	-	91.0	-	%
Output Voltage Set Point	-	3.3	-	V
Output Over Current Protection Set Point (full load)	103	-	140	%
Output Over Voltage Protection Set Point (typical Vo)	115	130	150	%
Output Ripple Frequency	280	300	320	kHz
Output Ripple and Noise Voltage RMS	-	10	-	mVrms
Peak-to-peak (5 Hz to 20 MHz bandwidth, typical Vin)	-	50	-	mVp-p
External Load Capacitance	-	-	10,000	µF

3.3V/15A Module (SYRS2033x015xxx(x)-x)

Parameter	Min	Typical	Max	Unit
Input Current	-	-	4	A
Quiescent Input Current (typical Vin)	-	100	120	mA
Standby Input Current	-	4	6	mA
Efficiency (typical Vin; full load, Ta = 25°C)	-	91.0	-	%
Output Voltage Set Point	-	3.3	-	V
Output Over Current Protection Set Point (full load)	103	120	140	%
Output Over Voltage Protection Set Point (typical Vo)	115	125	135	%
Output Ripple Frequency	280	300	320	kHz
Output Ripple and Noise Voltage RMS	-	15	-	mVrms
Peak-to-peak (5 Hz to 20 MHz bandwidth, typical Vin)	-	80	-	mVp-p
External Load Capacitance	-	-	12,000	µF

3.3V/25A Module (SYRS2033x025xxx(x)-x)

Parameter	Min	Typical	Max	Unit
Input Current	-	-	6.8	A
Quiescent Input Current (typical Vin)	-	100	120	mA
Standby Input Current	-	4	6	mA
Efficiency (typical Vin; full load, Ta = 25°C)	-	91.0	-	%
Output Voltage Set Point	-	3.3	-	V
Output Over Current Protection Set Point (full load)	103	120	150	%
Output Over Voltage Protection Set Point (typical Vo)	115	125	158	%
Output Ripple Frequency	280	300	320	kHz
Output Ripple and Noise Voltage RMS	-	15	-	mVrms
Peak-to-peak (5 Hz to 20 MHz bandwidth, typical Vin)	-	80	-	mVp-p
External Load Capacitance	-	-	15,000	µF

SYRS2 Series 18 – 36V Input Sixteenth Brick Converters

5V/12A Module (SYRS2050x012xxx(x)-x)

Parameter	Min	Typical	Max	Unit
Input Current	-	-	5	A
Quiescent Input Current (typical Vin)	-	75	100	mA
Standby Input Current	-	4	6	mA
Efficiency (typical Vin; full load, Ta = 25°C)	-	92.0	-	%
Output Voltage Set Point	-	5.0	-	V
Output Over Current Protection Set Point (full load)	103	120	150	%
Output Over Voltage Protection Set Point (typical Vo)	115	125	135	%
Output Ripple Frequency	280	300	320	kHz
Output Ripple and Noise Voltage RMS	-	15	-	mVrms
Peak-to-peak (5 Hz to 20 MHz bandwidth, typical Vin)	-	50	-	mVp-p
External Load Capacitance	-	-	10,000	µF

5V/17A Module (SYRS2050x017xxx(x)-x)

Parameter	Min	Typical	Max	Unit
Input Current	-	-	8	A
Quiescent Input Current (typical Vin)	-	75	100	mA
Standby Input Current	-	4	6	mA
Efficiency (typical Vin; full load, Ta = 25°C)	-	91.5	-	%
Output Voltage Set Point	-	5.0	-	V
Output Over Current Protection Set Point (full load)	17.8	21.4	25	A
Output Over Voltage Protection Set Point (typical Vo)	5.6	6.25	6.88	V
Output Ripple Frequency	280	300	320	kHz
Output Ripple and Noise Voltage RMS	-	-	15	mVrms
Peak-to-peak (5 Hz to 20 MHz bandwidth, typical Vin)	-	-	100	mVp-p
External Load Capacitance	-	-	10,000	µF

6V/6A Module (SYRS2060x006xxx(x)-x)

Parameter	Min	Typical	Max	Unit
Input Current	-	-	5	A
Quiescent Input Current (typical Vin)	-	75	100	mA
Standby Input Current	-	2	10	mA
Efficiency (typical Vin; full load, Ta = 25°C)	-	92.0	-	%
Output Voltage Set Point	-	6.0	-	V
Output Over Current Protection Set Point (full load)	110	120	150	%
Output Over Voltage Protection Set Point (typical Vo)	115	125	145	%
Output Ripple Frequency	230	250	270	kHz
Output Ripple and Noise Voltage RMS	-	-	50	mVrms
Peak-to-peak (5 Hz to 20 MHz bandwidth, typical Vin)	-	-	130	mVp-p
External Load Capacitance	-	-	4,000	µF

SYRS2 Series 18 – 36V Input Sixteenth Brick Converters

6V/12A Module (SYRS2060x012xxx(x)-x)

Parameter	Min	Typical	Max	Unit
Input Current	-	-	6	A
Quiescent Input Current (typical Vin)	-	105	135	mA
Standby Input Current	-	10	15	mA
Efficiency (typical Vin; full load, Ta = 25°C)	-	91.5	-	%
Output Voltage Set Point	-	6.0	-	V
Output Over Current Protection Set Point (full load)	115	130	160	%
Output Over Voltage Protection Set Point (typical Vo)	115	125	150	%
Output Ripple Frequency	230	250	270	kHz
Output Ripple and Noise Voltage RMS	-	95	150	mVrms
Peak-to-peak (5 Hz to 20 MHz bandwidth, typical Vin)	-	280	420	mVp-p
External Load Capacitance	-	-	3,000	µF

8V/8A Module (SYRS2080x008xxx(x)-x)

Parameter	Min	Typical	Max	Unit
Input Current	-	-	6	A
Quiescent Input Current (typical Vin)	-	130	160	mA
Standby Input Current	-	8	15	mA
Efficiency (typical Vin; full load, Ta = 25°C)	-	91.0	-	%
Output Voltage Set Point	-	8.0	-	V
Output Over Current Protection Set Point (full load)	8.5	10.5	13.5	A
Output Over Voltage Protection Set Point (typical Vo)	8.8	11	12.5	V
Output Ripple Frequency	270	300	330	kHz
Output Ripple and Noise Voltage RMS	-	30	98	mVrms
Peak-to-peak (5 Hz to 20 MHz bandwidth, typical Vin)	-	60	200	mVp-p
External Load Capacitance	-	-	4,000	µF

8V/11A Module (SYRS2080x011xxx(x)-x)

Parameter	Min	Typical	Max	Unit
Input Current	-	-	8	A
Quiescent Input Current (typical Vin)	-	130	160	mA
Standby Input Current	-	8	15	mA
Efficiency (typical Vin; full load, Ta = 25°C)	-	91.0	-	%
Output Voltage Set Point	-	8.0	-	V
Output Over Current Protection Set Point (full load)	11.55	13.75	16.5	A
Output Over Voltage Protection Set Point (typical Vo)	8.8	11	12.5	V
Output Ripple Frequency	270	300	330	kHz
Output Ripple and Noise Voltage RMS	-	45	98	mVrms
Peak-to-peak (5 Hz to 20 MHz bandwidth, typical Vin)	-	98	200	mVp-p
External Load Capacitance	-	-	4,000	µF

SYRS2 Series 18 – 36V Input Sixteenth Brick Converters

9V/6A Module (SYRS2090x006xxx(x)-x)

Parameter	Min	Typical	Max	Unit
Input Current	-	-	5	A
Quiescent Input Current (typical Vin)	-	70	90	mA
Standby Input Current	-	10	15	mA
Efficiency (typical Vin; full load, Ta = 25°C)	-	90.5	-	%
Output Voltage Set Point	-	9.0	-	V
Output Over Current Protection Set Point (full load)	105	130	160	%
Output Over Voltage Protection Set Point (typical Vo)	115	125	150	%
Output Ripple Frequency	230	250	270	kHz
Output Ripple and Noise Voltage RMS	-	60	90	mVrms
Peak-to-peak (5 Hz to 20 MHz bandwidth, typical Vin)	-	200	300	mVp-p
External Load Capacitance	-	-	2,000	µF

12V/3A Module (SYRS2120x003xxx(x)-x)

Parameter	Min	Typical	Max	Unit
Input Current	-	-	2.6	A
Quiescent Input Current (typical Vin)	-	80	100	mA
Standby Input Current	-	4	6	mA
Efficiency (typical Vin; full load, Ta = 25°C)	-	91.5	-	%
Output Voltage Set Point	-	12.0	-	V
Output Over Current Protection Set Point (full load)	110	130	160	%
Output Over Voltage Protection Set Point (typical Vo)	113	125	135	%
Output Ripple Frequency	280	300	320	kHz
Output Ripple and Noise Voltage RMS	-	15	-	mVrms
Peak-to-peak (5 Hz to 20 MHz bandwidth, typical Vin)	-	40	-	mVp-p
External Load Capacitance	-	-	1,000	µF

12V/7.5A Module (SYRS2120x008xxx(x)-x)

Parameter	Min	Typical	Max	Unit
Input Current	-	-	5.5	A
Quiescent Input Current (typical Vin)	-	80	100	mA
Standby Input Current	-	4	6	mA
Efficiency (typical Vin; full load, Ta = 25°C)	-	91.0	-	%
Output Voltage Set Point	-	12.0	-	V
Output Over Current Protection Set Point (full load)	110	120	160	%
Output Over Voltage Protection Set Point (typical Vo)	115	125	135	%
Output Ripple Frequency	280	300	320	kHz
Output Ripple and Noise Voltage RMS	-	15	-	mVrms
Peak-to-peak (5 Hz to 20 MHz bandwidth, typical Vin)	-	40	-	mVp-p
External Load Capacitance	-	-	1,000	µF

SYRS2 Series 18 – 36V Input Sixteenth Brick Converters

15V/3A Module (SYRS2150x003xxx(x)-x)

Parameter	Min	Typical	Max	Unit
Input Current		-	4	A
Quiescent Input Current (typical Vin)		80	100	mA
Standby Input Current	-	2	4	mA
Efficiency (typical Vin; full load, Ta = 25°C)	-	90.0	-	%
Output Voltage Set Point	-	15.0	-	V
Output Over Current Protection Set Point (full load)	110	120	170	%
Output Over Voltage Protection Set Point (typical Vo)	115	125	150	%
Output Ripple Frequency	280	300	320	kHz
Output Ripple and Noise Voltage RMS	-	15	20	mVrms
Peak-to-peak (5 Hz to 20 MHz bandwidth, typical Vin)	-	50	75	mVp-p
External Load Capacitance	-	-	1,500	µF

15V/6A Module (SYRS2150x006xxx(x)-x)

Parameter	Min	Typical	Max	Unit
Input Current	-	-	6.0	A
Quiescent Input Current (typical Vin)	-	80	100	mA
Standby Input Current	-	4	6	mA
Efficiency (typical Vin; full load, Ta = 25°C)	-	91.0	-	%
Output Voltage Set Point	-	15.0	-	V
Output Over Current Protection Set Point (full load)	110	120	160	%
Output Over Voltage Protection Set Point (typical Vo)	115	125	135	%
Output Ripple Frequency	280	300	320	kHz
Output Ripple and Noise Voltage RMS	-	15	20	mVrms
Peak-to-peak (5 Hz to 20 MHz bandwidth, typical Vin)	-	50	75	mVp-p
External Load Capacitance	-	-	1,500	µF

28V/2.5A Module (SYRS2280x003xxx(x)-x)

Parameter	Min	Typical	Max	Unit
Input Current	-	-	7	A
Quiescent Input Current (typical Vin)	-	80	100	mA
Standby Input Current	-	4	8	mA
Efficiency (typical Vin; full load, Ta = 25°C)	-	91.5	-	%
Output Voltage Set Point	-	28.0	-	V
Output Over Current Protection Set Point (full load)	115	120	160	%
Output Over Voltage Protection Set Point (typical Vo)	115	130	150	%
Output Ripple Frequency	230	250	270	kHz
Output Ripple and Noise Voltage RMS	-	-	80	mVrms
Peak-to-peak (5 Hz to 20 MHz bandwidth, typical Vin)	-	-	280	mVp-p
External Load Capacitance	-	-	500	µF

Feature Descriptions

Remote ON/OFF

The converter can be turned on and off by changing the voltage between the ON/OFF pin and Vin(-). The SYRS2 Series of converters are available with factory selectable positive logic and negative logic.

For the negative control logic, the converter is ON when the ON/OFF pin is at a logic low level and OFF when the ON/OFF pin is at a logic high level. For the positive control logic, the converter is ON when the ON/OFF pin is at a logic high level and OFF when the ON/OFF pin is at a logic low level.

With the internal pull-up circuitry, a simple external switch between the ON/OFF pin and Vin(-) can control the converter. A few example circuits for controlling the ON/OFF pin are shown in Figures 1, 2 and 3.

The logic low level is from 0V to 1.2V and the maximum sink current during logic low is 1mA. The external switch must be capable of maintaining a logic-low level while sinking up to this current. The logic high level is from 3.5V to 15V. The converter has an internal pull-up circuit that ensures the ON/OFF pin at a high logic level when the leakage current at ON/OFF pin is no greater than 50µA.

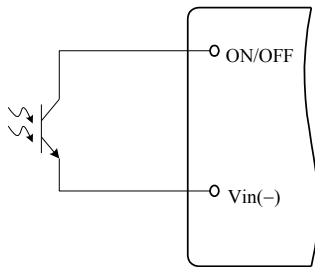


Figure 1. Opto Coupler Enable Circuit

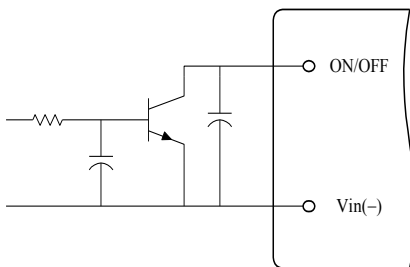


Figure 2. Open Collector Enable Circuit

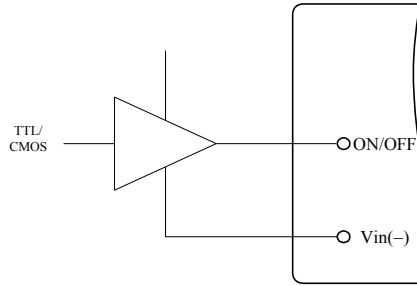


Figure 3. Direct Logic Drive

Remote SENSE

The remote SENSE pins are used to sense the voltage at the load point to accurately regulate the load voltage and eliminate the impact of the voltage drop in the power distribution path.

SENSE (+) and SENSE (-) pins should be connected between the points where voltage regulation is desired. The voltage between the SENSE pins and the output pins must not exceed the smaller of 0.5V or 10% of typical output voltage.

$$[V_{out (+)} - V_{out (-)}] - [SENSE (+) - SENSE (-)] < \text{MIN} \{0.5V, 10\%V_o\}$$

When remote sense is not used, the SENSE pins should be connected to their corresponding output pins. If the SENSE pins are left floating, the converter will deliver an output voltage slightly higher than its specified typical output voltage.

Output Voltage Adjustment (Trim)

The trim pin allows the user to adjust the output voltage set point. To increase the output voltage, an external resistor is connected between the TRIM pin and SENSE(+). To decrease the output voltage, an external resistor is connected between the TRIM pin and SENSE(-). The output voltage trim range is 80% to 110% of the specified typical output voltage.

The circuit configuration for trim down operation is shown in Figure 4. To decrease the output voltage, the value of the external resistor should be

$$R_{down} = \left(\frac{511}{\Delta} - 10.22 \right) (k\Omega)$$

Where

$$\Delta = \left(\frac{|V_{nom} - V_{adj}|}{V_{nom}} \right) \times 100$$

And

V_{nom} = Typical Output Voltage
 V_{adj} = Adjusted Output Voltage

The circuit configuration for trim up operation is shown in Figure 5. To increase the output voltage, the value of the resistor should be

$$R_{up} = \left(\frac{5.11V_o(100 + \Delta)}{1.225\Delta} - \frac{511}{\Delta} - 10.22 \right) (k\Omega)$$

Where

V_o = Typical Output Voltage

As the output voltage at the converter output terminals are higher than the specified typical level when using the trim up and/or remote sense functions, it is important to make sure that the voltage at the output terminals does not exceed the maximum power rating of the converter as given in the Specifications table.

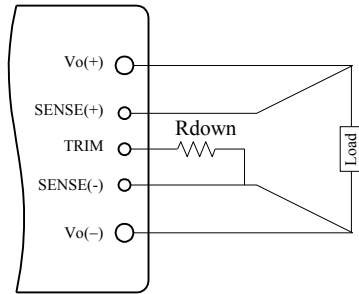


Figure 4. Circuit to Decrease Output Voltage

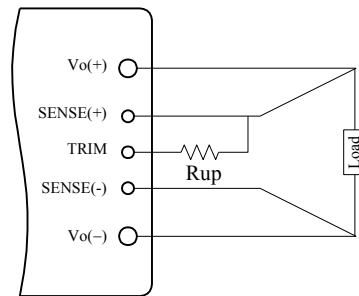


Figure 5. Circuit to Increase Output Voltage

Output Over-Current Protection (OCP)

This converter can be ordered in either latch-off or auto-restart version upon OCP, OVP, and OTP.

With the latch-off version, the converter will latch off when the load current exceeds the limit. The converter can be restarted by toggling the ON/OFF switch or recycling the input voltage.

With the auto-restart version, the converter will operate in a hiccup mode (repeatedly try to restart) until the cause of the over-current condition is cleared.

Output Over-Voltage Protection (OVP)

With the latch-off version, the converter will latch off when the output voltage exceeds the limit. The converter can be restarted by toggling the ON/OFF switch or recycling the input voltage.

With the auto-restart version, the converter will operate in a hiccup mode (repeatedly try to restart) until the cause of the over-voltage condition is cleared.

Over Temperature Protection (OTP)

With the latch-off version, the converter will shut down and latch off if an over-temperature condition is detected. The converter has a temperature sensor located at a carefully selected position, which represents the thermal condition of key components of the converter. The thermal shutdown circuit is designed to turn the converter off when the temperature at the sensor reaches 120°C. The module can be restarted by toggling the ON/OFF switch or recycling the input voltage.

With the auto-restart version, the converter will resume operation after the converter cools down.

Design Considerations

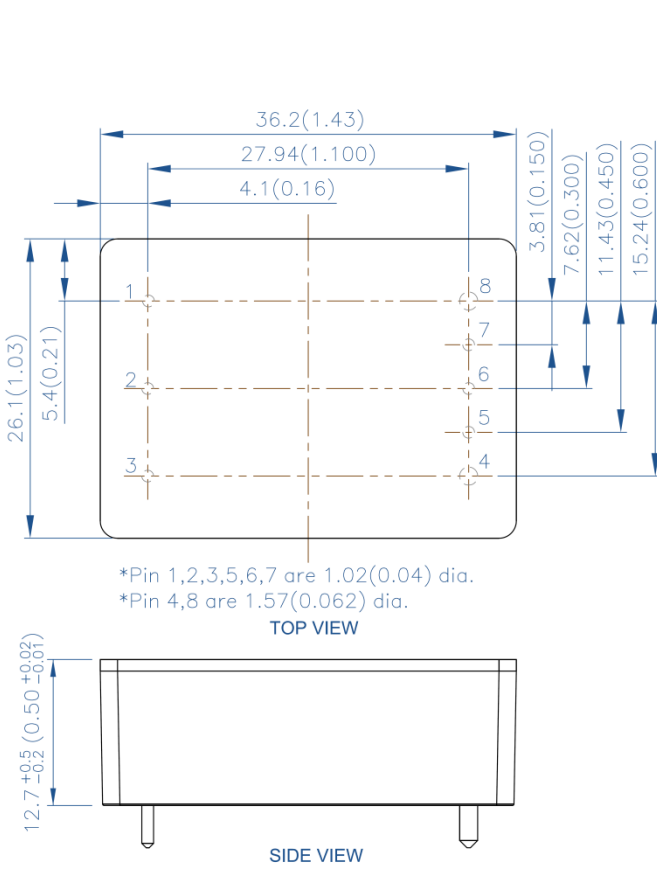
As with any DC/DC converter, the stability of the SYRS2 converters may be compromised if the source impedance is too high or inductive. It’s desirable to keep the input source ac-impedance as low as possible. Although the converters are designed to be stable without adding external input capacitors for typical source impedance, it is recommended to add 100 μF low ESR electrolytic capacitors at the input of the converter for each 100W output power, which reduces the potential negative impact of the source impedance on the converter stability. These electrolytic capacitors should have sufficient RMS current rating over the operating temperature range.

The converter is designed to be stable without additional output capacitors. To further reduce the output voltage ripple or improve the transient response, additional output capacitors are often used in applications. When additional output capacitors are used, a combination of ceramic capacitors and tantalum/polymer capacitors shall be used to provide good filtering while assuring the stability of the converter.

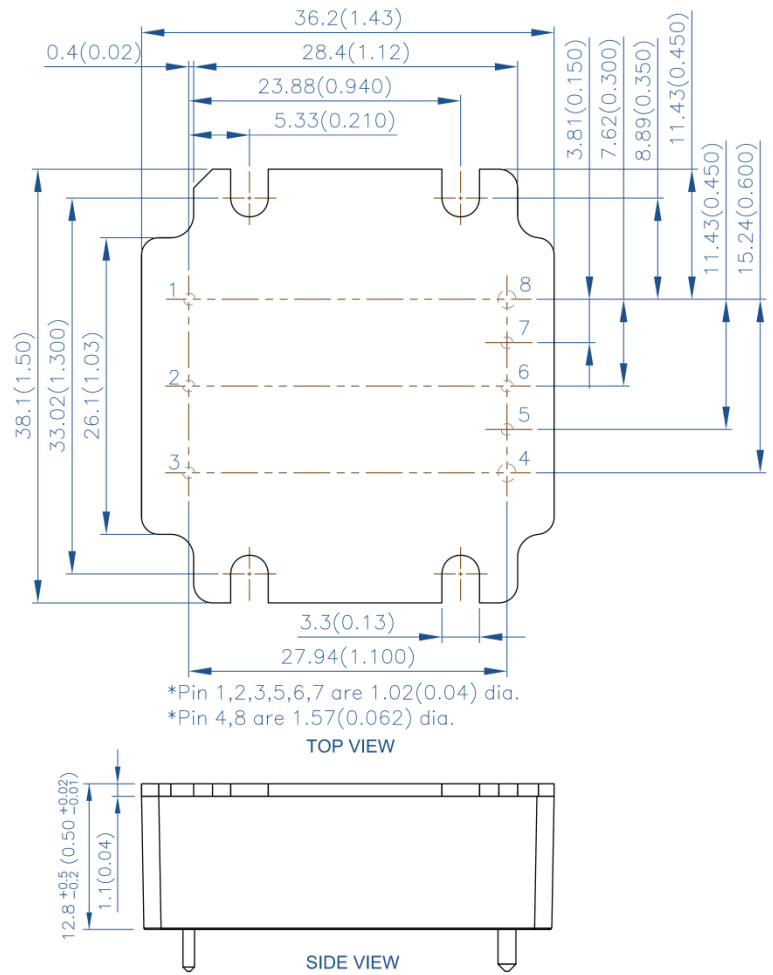
SYRS2 Series 18 – 36V Input Sixteenth Brick Converters

Mechanical Drawing

Without flange



With flange



Pin	Name	Function
1	Vin(+)	Positive input voltage
2	ON/OFF	Remote control
3	Vin(-)	Negative input voltage
4	Vout(-)	Negative output voltage
5	SENSE(-)	Negative remote sense
6	TRIM	Output voltage adjustment
7	SENSE(+)	Positive remote sense
8	Vout(+)	Positive output voltage

Notes

- All dimensions in mm (inches)
Tolerances: .x ± .5 (.xx ± 0.02)
.xx ± .25 (.xxx ± 0.010)
- Input and function pins are 1.02mm (0.040") dia. with +/- 0.10mm (0.004") tolerance; the recommended diameter of the receiving hole is 1.42mm (0.056").
- Output pins are 1.57 mm (0.062") dia. with +/- 0.10mm (0.004") tolerance; the recommended diameter of the receiving hole is 1.98mm (0.078").
- All pins are coated with 90%/10% solder, Gold, or Matte Tin finish with Nickel under plating.
- Workmanship meets or exceeds IPC-A-610 Class II
- Torque applied on screw should not exceed 6in-lb (0.7Nm)
- Baseplate flatness tolerance is 0.10mm (0.004") TIR for surface.